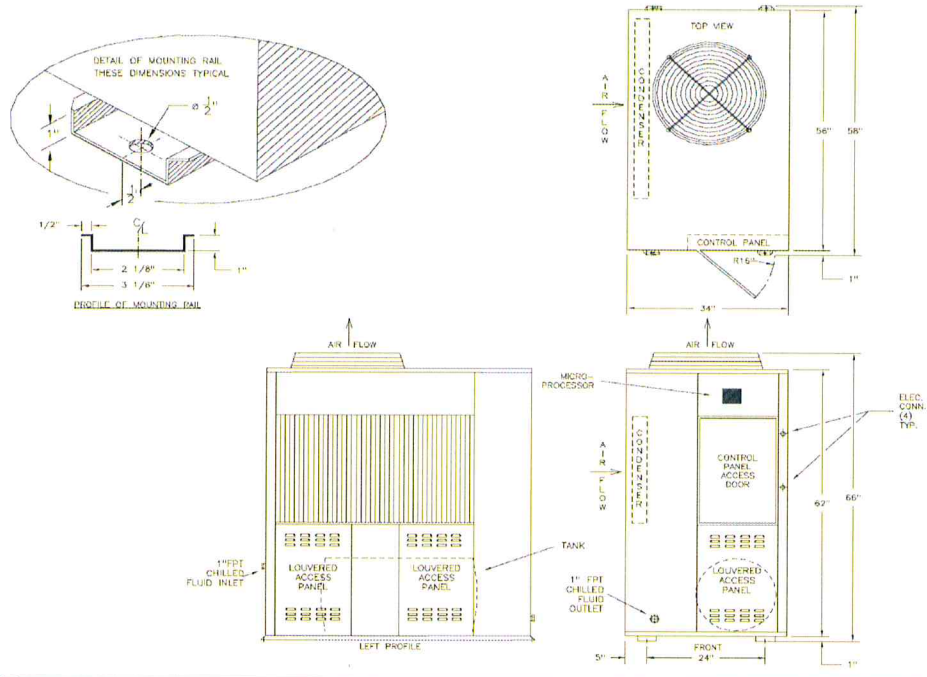




PACT60S

PACKAGED AIR-COOLED 6 HP SINGLE CIRCUIT SCROLL WITH TANK

DIMENSIONAL DRAWINGS



LENGTH	WIDTH	HEIGHT	WEIGHT	TANK CAPACITY	FLUID CONNECTIONS
34"	58"	66"	900 LBS	60 GAL.	1" FPT

PRODUCT PERFORMANCE INFORMATION

REFRIGERANT	COMPRESSOR OPER. SUCTION TEMP. RANGE	LFT °F	80°F AMB		90°F AMB		95°F AMB		100°F AMB		105°F AMB	
			TONS	EER	TONS	EER	TONS	EER	TONS	EER	TONS	EER
R407C	25°F to 55°F	40	4.3	10.7	4.0	9.1	3.9	8.4	3.7	7.6	3.6	7.1
		50	5.3	12.6	5.0	10.8	4.8	9.9	4.7	9.2	4.5	8.5
		60	6.4	14.6	6.0	12.5	5.9	11.7	5.7	10.7	5.5	9.9
		70	7.6	16.7	7.2	14.3	7.0	13.4	6.8	12.3	6.6	11.4
R404A	-10°F to 45°F	5	2.5	6.1	2.3	5.0	2.1	4.5	2.0	4.0	1.9	3.5
		15	3.1	7.4	2.8	6.1	2.7	5.5	2.5	4.9	2.4	4.4
		30	4.2	9.6	3.9	8.0	3.7	7.2	3.5	6.5	3.3	5.9
		45	5.5	12.0	5.0	10.0	4.8	9.1	4.6	8.3	4.4	7.5
		60	6.8	14.5	6.3	12.1	6.1	11.1	5.8	10.1	5.5	9.2

DRAKE REFRIGERATION INC
 2900 SAMUEL DRIVE
 BENSALEM, PA 19020
 (888) 289-7299
 www.drakechillers.com

*ALL INFORMATION FOR REFERENCE ONLY



PACT60S

PACKAGED AIR-COOLED 6 HP SINGLE CIRCUIT SCROLL WITH TANK

STANDARD FEATURES	
FEATURE	BENEFIT
Listings	ETL 3046941, UL STD 1995, CAN/CSA STD, C22.2 No. 236
Microprocessor Control	Stand alone, simple, accurate control with over 10 years of field testing
Stainless Steel Brazed Plate Evaporator	Corrosion resistant evaporator wrapped in closed cell insulation
Copeland Scroll Compressor	Industry leader, long lasting compressor
Compressor Crankcase Heater	Prevents compressor damage caused by cold refrigerant on startup
Suction Accumulator	Protects the compressor from damage caused by liquid flood back by preventing liquid from entering the compressor
Water Flow Switch	Protects against process fluid freezing caused by fluid pump failure
Hot Gas Bypass	Aids in the prevention of evaporator freeze ups and capacity control
Copper Tube/Aluminum Fin Condenser	Rust resistant and high CFM
Painted Galvanized Steel Metal Cabinet	Sturdy, corrosion resistance, professional appearance
Insulated Process Fluid Lines	Maximum thermal efficiency
Factory Tested	Ensures the unit meets the customer's performance designed criteria and arrives in working order
Full Refrigerant Charge	Hassle free and more efficient installation
Stainless Steel Storage Tank	Closed cell insulation for increase temperature control with reliable, corrosion resistant, stainless steel recirculation pump
NEMA 3R Rated Electrical	Indoor/outdoor use

AVAILABLE OPTIONS	
OPTIONS	AVAILABLE
Controls	BMS, BAS communications, remote access, monitoring services
Extended Warranty	4 year extended compressor warranty
Electrical	Compressor fusing, phase monitors, disconnects and more
Stainless Steel Pumps	1/3 HP to 25 HP on board pumps in multiple configurations & options
Fluid Piping Upgrades	Flow meters, pressure gauges, low flow bypass valves, and more
Coastal Protection/Hazardous Environments	Heresite coating, "Gold" and Copper condenser coils
Low Ambient Protection	Head pressure control for low ambient temperatures down to -20°F
Other	Tank sight glass, city water recovery, low liquid level alerts, etc.

More options and customization available, contact factory for information: (888) 289 - 7299

AVAILABLE MODEL NUMBER VOLTAGE REFERENCE
T3 (208-230/3/60) --- T4 (460/3/60) --- T5 (575/3/60)

PRODUCT INFORMATION											
MODELS AVAILABLE		COMPRESSOR			FAN MOTOR		RLA EA	LRA EA	MCA	MOP	EVAP. PUMP EA
R407C	R404A	MODEL	QTY	HP	QTY	FLA EA					
PACT60S3-T3-Z		ZB45KCE	1	6	1	3.3	20.7	156	35	50	5.1
PACT60S3-T4-Z						1.6	11.5	75	20	25	1.3
PACT60S3-T5-Z						1.72	7.9	54	15	20	0.72
PACT60S6-T3-Z		ZB45KCE	1	6	1	3.3	22.5	156	40	55	5.1
PACT60S6-T4-Z						1.6	10.1	75	20	25	1.3
PACT60S6-T5-Z						1.72	7.9	54	15	20	0.72

DRAKE REFRIGERATION INC
 2900 SAMUEL DRIVE
 BENSALEM, PA 19020
 (888) 289-7299
 www.drakechillers.com

*ALL INFORMATION FOR REFERENCE ONLY

Application:		Ambient Air (°F)		95		Nominal BTU/Hr:		57,742	
Condensing Method:		Air Cooled		54		Refrigerant:		407C	
Location:		Water [32°F]		44		Sat. Suct. (°F):		30	
Fluid [Freeze Point]:		460 / 3 / 60		10.4		Actual Tons:		4.3	
Voltage:		460 / 3 / 60		51,884		Actual BTU/Hr:		51,884	
ITEM	PN/Model	DESCRIPTION	QTY	LIST PRICE	NET PRICE				
CHILLER	PACT60S3-T4-Z	Packaged Air Cooled Chiller w/ Tank	1						
Controls	CTRL-STD	PSG Microprocessor [Standard]	1						
Glycol Evap.			1						
Ext. Warr.	W-STD	1 year warranty on all parts [Standard]	1						
Condenser	CND-STD	Aluminum Fin Condenser [Standard]	1						
Low Ambient	D500-895	Low Ambient 20°F [Variable Fan Speed]	1						
Unloading			1						
Options	BP-STD	High-Efficiency Brazed Plate Evaporator [Standard]	1						
Options	REF-STD	Unit Shipped with Full Refrigerant Charge [Standard]	1						
Options	SLA-STD	Suction Line Accumulator(s) [Standard]	1						
Options	HGBP-STD	Hot Gas Bypass [Standard]	1						
Options	D500-700	Casters, Factory Mounted	1						
Options			1						
Options			1						
Options			1						
Tank / PHXS	TANK-STD	60 Gallon On-Board Recirc Tank with Pump [Included]	1						
Tank Options	D500-201	24" Tank Sight Glass (60 thru 135gal)	1						
Tank Options			1						
Pump	D500-4031-T4-P	35GPM @ 30 psi - 1HP - Process Pump	1						
Pump Options	ISO-STD	Isolation Ball Valves w/ Unions [Standard]	1						
Pump Options			1						
Pump			1						
Pump Options			1						
TOTALS:									

PRICES ARE VALID FOR THIRTY (30) DAYS. Drake reserves the right to correct typographical errors. Terms are net thirty days from shipment upon approval of credit. Warranty is 1 year on parts only, unless noted otherwise. Freight is NOT included. All quotes are FOB factory in Bensalem, PA